

OHIO TURNPIKE AND INFRASTRUCTURE COMMISSION

ADDENDUM NO. 1

**BID INVITATION NO. 4210
FURNISHING PORTABLE CONCRETE BARRIER**

OPENING DATE:
2:00 P.M. (E.S.T.), NOVEMBER 26, 2013


ATTENTION OF BIDDERS IS DIRECTED TO:

ANSWERS TO QUESTIONS RECEIVED THROUGH 12:00 P.M., NOVEMBER 18, 2013


MODIFICATIONS TO THE CONTRACT DOCUMENTS

Cover Page
Addition of OTIC Standard Drawing XOY-3

Issued by the Ohio Turnpike and Infrastructure Commission November 18, 2013.
Authorized by Richard Hodges, Executive Director, and Kathleen Weiss, General Counsel.



Richard Hodges 11/18/13 Date



Kathleen Weiss 11/18/13 Date

ANSWERS TO QUESTIONS RECEIVED THROUGH 12:00 P.M., NOVEMBER 18, 2013:

Q#1 Would you allow for approved alternatives to the concrete barrier specified in this bid?

A#1 No. Portable concrete barrier sections are required for the median wall openings for which the Commission intends to use the material procured under this Invitation.

Q#2 Will you take a value-based approach to evaluating the bids rather than strictly lowest bid?

A#2 No. The Invitation specifies that the Commission will award any resulting contract based on its determination of the lowest, responsive and responsible bid.

Q#3 Will you provide the details on the PCB Transition item?

A#3 With this Addendum No. 1, the Commission is providing Bidders with Standard Drawing XOV-3, referenced in the Specifications on Page 7, for the context of this Invitation to Bid. The design, including adequate reinforcing steel area and placement and concrete mix design, are left to the manufacturer's discretion to achieve the intended purpose of the Portable Concrete Barrier. See Specifications on page 7 of the Invitation to Bid.

Q#4 We manufacture barrier in 12' sections. Your bid form only specifies 10' sections. Shall I base my bid on the total lineal foot required 2660' which would end up being 222 pieces of 32" barrier?

A#4 The Commission requires ten (10) foot sections as specified. The Commission intends to use the Portable Concrete Barrier ("PCB") procured under this Invitation to replace the existing barrier wall at third-lane crossover locations. As depicted in Standard Drawing XOV-3, seventy-six (76) feet of PCB is needed, which includes the six (6) foot transition piece and seventy (70) feet of thirty-two (32) inch tall PCB constituting seven (7), ten (10) foot long sections. Because the PCB in these crossover locations is damaged from time to time, the Commission must routinely replace these PCBs. Stocking two (2) different lengths of PCB would create operational issues for the Commission when replacing damaged barriers at these crossover locations.

Q#5 The bid is asking for 10' long sections of the standard 32" barrier. Are 12' lengths acceptable?

A#5 See response to Q#4.

THE FOLLOWING MODIFICATIONS ARE MADE TO THE CONTRACT DOCUMENTS FOR INVITATION NO. 4210:

Modifications are shown with ***bold italicized*** text and deletions are shown with strikethrough text.

The Cover Page is hereby modified to provide Bidders with Standard Drawing XOV-3, referenced on Page 7 of the Specifications, as part of the Contract Documents by increasing the Drawings included as Attachments to the Invitation to Bid from (2 Sheets) to (3 Sheets).

ADDITIONAL DRAWING: ***OTIC Standard Drawing XOV-3***, depicting the Third Lane Crossover Section discussed at Page 7 of the Specifications, is hereby as part of the Contract Documents.

(Bidders are advised to utilize the attached replacement Cover Page and Standard Drawing XOV-3.)

Receipt of Addendum No. 1, Invitation No. 4210 is hereby acknowledged:

(Firm Name) _____

(Signature) _____

(Printed Name) _____

(Date) _____

BIDDERS MUST RETURN THE ABOVE ACKNOWLEDGEMENT OF RECEIPT OF ADDENDUM NO. 1 WITH THEIR BID.

**OHIO TURNPIKE AND
INFRASTRUCTURE COMMISSION**

682 PROSPECT STREET
PROCUREMENT DEPARTMENT
BEREA, OHIO 44017
440-234-2081

BID INVITATION NO. 4210

FOR FURNISHING:

PORTABLE CONCRETE BARRIER

OPENING DATE:

2:00 P.M. (E S T.), NOVEMBER 26, 2013

SUBMITTED BY:

COMPANY NAME: _____

CONTACT NAME: _____

STREET ADDRESS: _____

CITY AND STATE: _____ ZIP: _____

TELEPHONE NUMBER: _____

FAX NUMBER: _____

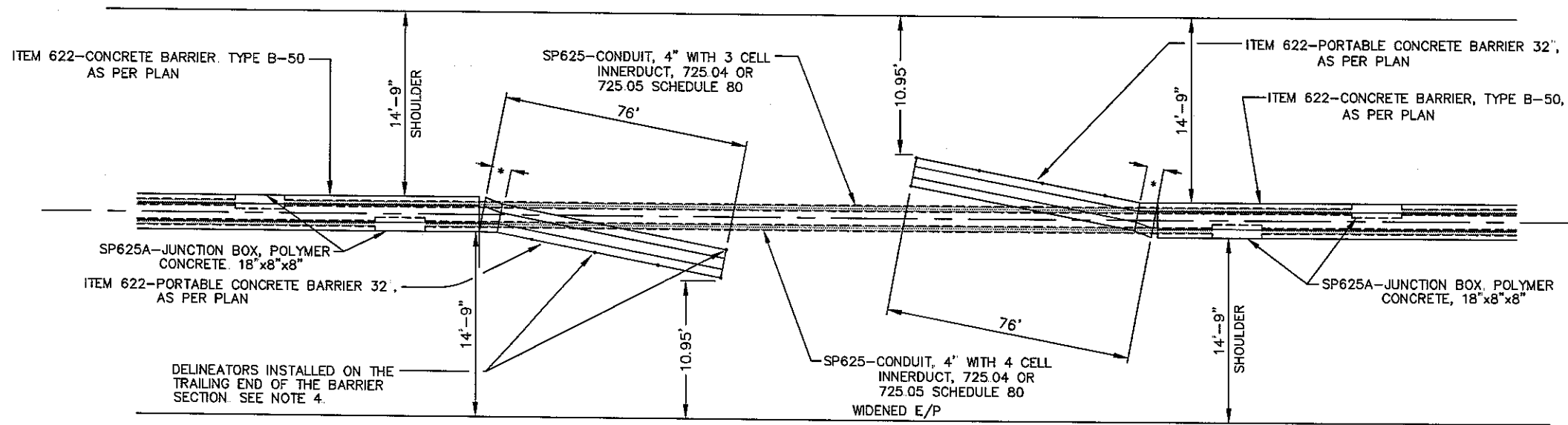
EMAIL: _____

ATTACHMENTS:

- Facilities Map
- Drawings (2 3 Sheets)

Published and Copyrighted © 2013 by The Ohio Turnpike and Infrastructure Commission

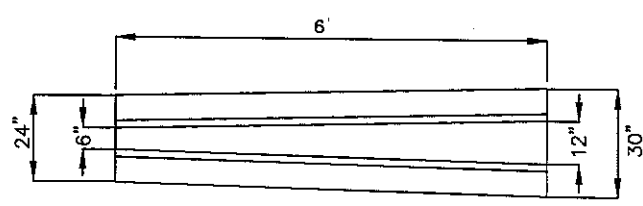
If you have received these Contract Documents from any entity other than the Ohio Turnpike Commission, you risk the receipt of inaccurate information and/or plans; and will not receive any addenda issued by the Commission. These documents are copyrighted by the Ohio Turnpike Commission. Any unauthorized electronic reproduction of these documents for the purpose of resale or bidding subscription services is expressly prohibited.



LEGEND:

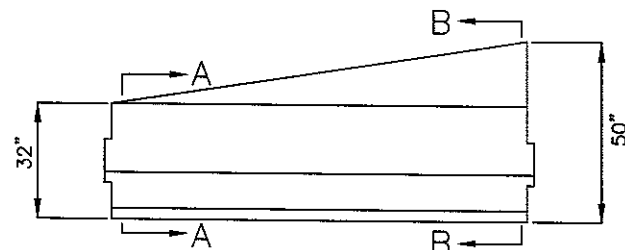
- 1 1" RADIUS OR 3/4" CHAMFER, ALL TOP AND END CORNERS
- 2 PERMISSIBLE 10" RADIUS
- 3 PERMISSIBLE 1" RADIUS

MAINTENANCE CROSSOVER



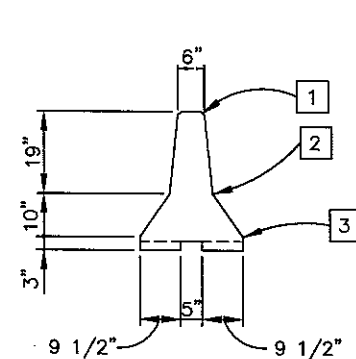
**PLAN VIEW
TRANSITION SECTION**

* SEE NOTES 3 AND 4



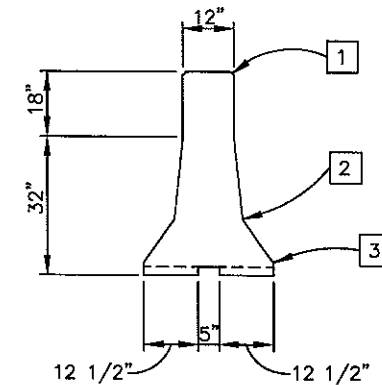
**ELEVATION VIEW
TRANSITION SECTION**

* SEE NOTES 3 AND 4



A-A VIEW

* SEE NOTES 3 AND 4

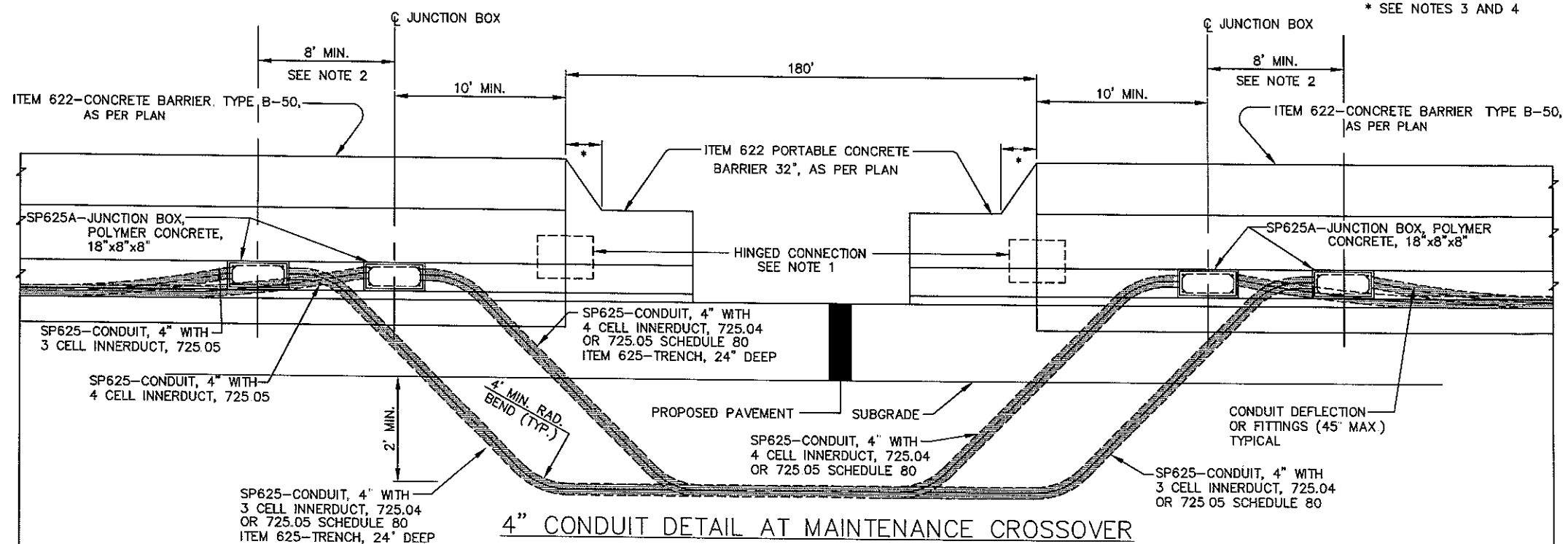


B-B VIEW

* SEE NOTES 3 AND 4

NOTES:

- 1 HINGED BAR PLACEMENT: REFER TO HINGED CONNECTION DETAIL ON ODOT STANDARD DRAWING RM-4.2. HINGED CONNECTION IS INCLUDED IN THE UNIT PRICE BID FOR ITEM 622-PORTABLE CONCRETE BARRIER 32", AS PER PLAN
- 2 SP625A-JUNCTION BOX, POLYMER CONCRETE, 18'x8'x8" SHALL BE STAGGERED 8' ON CENTER AT ALL LOCATIONS. FOR DETAILS, SEE OTC STANDARD DRAWING JB-1.
- 3 A 6' SECTION OF TRANSITION BARRIER SHALL BE PROVIDED ACCORDING TO ODOT STANDARD DRAWING RM-4.2, VIEW A-A AND VIEW B-B OF THIS SHEET AND SHALL MATCH BOTH ITEM 622 CONCRETE BARRIER TYPE B-50, AS PER PLAN AND ITEM 622 PORTABLE CONCRETE BARRIER, 32", AS PER PLAN.
- 4 ITEM 622 - PORTABLE CONCRETE BARRIER 32', AS PER PLAN THIS ITEM SHALL BE AS PER SECTION 622 OF THE SPECIFICATIONS AND AS SHOWN ON ODOT STANDARD DRAWING RM-4.2. THE BARRIER SHALL BE NEW AND LEFT IN PLACE UPON COMPLETION OF THE WORK. THE UNIT PRICE BID FOR ITEM 622 - PORTABLE CONCRETE BARRIER 32', AS PER PLAN SHALL INCLUDE ALL MATERIAL AND LABOR REQUIRED INCLUDING DELINEATORS. DELINEATORS SHALL MEET THE REQUIREMENTS OF SP802



4" CONDUIT DETAIL AT MAINTENANCE CROSSOVER

OHIO TURNPIKE

MAINTENANCE CROSSOVER
DETAILS

DATE: June 25, 2007 SCALE: N.T.S.
OTC STANDARD DRAWING XOY-3